

ToolcraftPlastics

Moulding Your Ideas...

Standard Plastic Trays

choose from 150+ styles & sizes
made to order in 2-3 days
black, white, clear, coloured materials
antistatic, oil & chemical resistant & recycled materials

perfect for optimising workflow
ideal for storage & transport of small components

“We ordered 450 vacuum formed trays in 3 different styles, with 250 matching lids. They were made to order and delivered within 5 days, to excellent quality. Thank you for a great service and very fast delivery.”

Sarah Yeaman, Contract Solutions



Units 1 & 5, Argyle Commercial Centre, Argyle Street, Swindon, SN2 8AR

T: 01793-641040 F: 01793-230690

e: help@toolcraft.co.uk w: www.toolcraft.co.uk

Order online at www.toolcraft.co.uk/vacuum_formed_standard_parts_trays_racks_order.php



Toolcraft Standard Plastic Trays

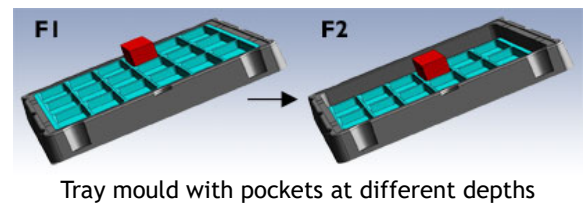
Toolcraft standard plastic kitting trays service allows you to choose of our range of more than 130 tray designs. They're suitable for memory chip & pcb storage, kitting, components, assembly lines, protection and transport of valuable or small products ... our customers use them in all sorts of ways.

Our trays have a number of useful features (all specified on the tray finder overleaf):

Nesting or stacking features: Nesting pockets save space & create a close fitting lid for each pocket. Stacking trays sit securely on top of each other, protecting the contents from the weight of the trays placed on top.



Flexible depth pockets: Tooling for flexible depth pocket trays comprises of an outer frame and inserts to make the pockets. The pockets for these trays can be moved in the tooling from their standard F1 depth positions to lower down F2 in the tray outer frame to make trays with larger effective pocket depths. This allows taller parts - up to 30mm - to fit in the pockets without poking above the trays.



Height extension : Some of our trays can have a tray height extension of **10 mm** so that the moveable pockets can be moved down by another 10 mm, thus allowing even taller parts to fit in the pockets without poking above the trays. These trays are made from thicker materials and priced per order.

Range of materials: Our trays are available in black, white, white ECO recycled, clear and black antistatic - prices for these are listed on our site. Coloured materials and special finishes such as mirror, pinseal, carbon fibre effects and flocked (felt) coated plastics are available too (see p8), as well as UV stabilised materials. These are priced per order.

Matching lids: nearly all of our trays have matching lids, as detailed on the trays listing overleaf.

How to find the perfect Toolcraft tray

Pick the tray you need from our tray finder overleaf, or use our tray listing online at www.toolcraft.co.uk/vfall_standard_antistatic_plastic_waffle_trays_lids_styles_sizes_features.htm.

The online tray finder can be organised according to your needs. By clicking the column header, you can sort by overall tray sizes, by pocket sizes & by pocket depths for example. So if you need a tray that fits 40 memory chips snugly, sort by pocket size, but if it's more important that the tray fits in your existing packaging box, sort by tray size.

When you've found the right tray, simply click through to see an image of the tray with **prices & materials**. It's quick and easy and the trays are made to order very fast - typically within 2-3 days. You can also order 16-tray sampler packs from £59. Check the pricing box (online) of the trays you're interested in for details.



Toolcraft Standard Trays - Tray Finder

(interactive listing at www.toolcraft.co.uk/vfall_standard_antistatic_plastic_waffle_trays_lids_styles_sizes_features.htm)

Tray Photos + Sizes	Tray Length	Tray Width	Tray Depth	Pocket Qty.	Pocket Length	Pocket Width	Pocket Depth	Moveable Pockets	Trays 1 Nest	Trays Stack	Matching Lids	Height Ext. 2	Price From 4
E1001	275	275	20	1	233	233	18	Yes 3	No	No	E1xxx Lid	No	£1.15
E1016B	275	275	20	16	48	48	16	Yes	Yes	Yes	E1xxx Lid	No	£1.15
E1025B	275	275	20	25	222	9 DIA	9 DIA	Yes	Yes	Yes	E1xxx Lid	No	£1.15
E1025C	275	275	20	25	38	38	12	Yes	Yes	Yes	E1xxx Lid	No	£1.15
E1030A	275	275	20	30	40	34	16	Yes	Yes	Yes	E1xxx Lid	No	£1.15
E1036A	275	275	20	36	28	28	15	Yes	Yes	Yes	E1xxx Lid	No	£1.15
E1050A	275	275	20	50	38	14	8	Yes	Yes	Yes	E1xxx Lid	No	£1.15
E1064	275	275	20	64	20	20	12	Yes	Yes	Yes	E1xxx Lid	No	£1.15
E1070	275	275	20	70	26	15	5	Yes	Yes	Yes	E1xxx Lid	No	£1.15
E1100B	275	275	20	100	18	18	6	Yes	Yes	Yes	E1xxx Lid	No	£1.15
F1001	244	244	20	1	205	205	20	No	Yes	No	F1xxx Lid	No	£2.10
F1002	244	244	20	2	205	97	20	No	Yes	No	F1xxx Lid	No	£2.10
F1004	244	244	20	4	97	97	20	No	Yes	No	F1xxx Lid	No	£2.10
F1010	244	244	20	10	97	33	20	No	Yes	No	F1xxx Lid	No	£2.10
F1056	244	244	19	56	19	10	2.5	No	Yes	No	F1xxx Lid	No	£2.10
F1100	244	244	7	100	11	11	7	No	Yes	No	F1100 Lid	No	£2.10
F1T008	255	155	25	8	60	45	25	No	Yes	No	F1Txxx Lid	No	£2.10
F1T010	255	155	25	10	60	36	25	No	Yes	No	F1Txxx Lid	No	£2.10
F1T012	255	155	25	12	36 DIA	36 DIA	25	No	Yes	Yes	F1Txxx Lid	No	£2.10
F1T020	255	155	20	20	36	26	20	No	Yes	No	F1Txxx Lid	No	£2.10
F3T006	355	255	25	6	90	86	25	No	Yes	Yes	F3Txxx Lid	No	£2.35
F3T015	355	255	25	15	65	50	25	No	Yes	Yes	F3Txxx Lid	No	£2.35
F5P28	355	293	18	28	72	29	18	No	No	Yes	F5Pxx Lid	No	£1.75
F5P60	355	293	15	60	59	17	14	No	No	Yes	F5Pxx Lid	No	£1.75
F5P80	355	293	13	80	31	20	13	No	No	Yes	F5Pxx Lid	No	£1.75
F7T014	555	355	25	14	110	57	25	No	Yes	No	No	No	£3.30
F7T100	555	355	17	100	28	28	17	No	Yes	Yes	No	No	£3.30
FDA06	620	420	54	6	160	150	54	No	Yes	Yes	No	No	£6.85
FEA08	620	420	72	8	140	100	72	No	Yes	Yes	No	No	£9.00
FFA04	620	420	100	4	246	146	100	No	Yes	Yes	No	No	£13.25
P1030	225	165	22	30	35	17	12	No	Yes	No	No	No	£2.10
P1072	220	175	7	72	19	10	4	No	Yes	Yes	P1072 Lid	No	£2.10
P1100	275	275	27	100	15 DIA	15 DIA	10	No	Yes	Yes	P1100 Lid	No	£2.10



Tray Photos + Sizes	Tray Length	Tray Width	Tray Depth	Pocket Qty.	Pocket Length	Pocket Width	Pocket Depth	Moveable Pockets	Trays Nest	Trays Stack	Matching Lids	Height Ext. 2	Price From 4
<u>P1PC10</u>	230	230	50	10	170	4	4.5	No	Yes	No	No	No	£3.80
<u>P2003</u>	244	244	40	3	196	55	40	No	Yes	Yes	No	No	£3.40
<u>P2004</u>	244	244	40	4	100	90	40	No	Yes	Yes	No	No	£3.40
<u>P3001</u>	318	255	16	1	300	214	16	No	Yes	No	No	No	£2.35
<u>P3012</u>	305	255	14	12	60	60	5	No	Yes	Yes	P3012 Lid	No	£2.35
<u>P3020</u>	305	255	15	20	43	43	15	No	Yes	Yes	P3020 Lid	No	£2.35
<u>P3025</u>	307	253	25	25	50	37	17	No	Yes	No	P3025 Lid	No	£2.35
<u>P3050</u>	305	255	25	50	40	25	10	No	Yes	No	P3050 Lid	No	£2.35
<u>P5050</u>	315	240	10	50	40	25	10	No	Yes	No	No	No	£1.75
<u>P7012A</u>	370	345	25	12	105	55	25	No	Yes	No	No	No	£3.30
<u>P7012B</u>	490	335	35	12	140	60	35	No	Yes	No	No	No	£3.30
<u>P7020A</u>	375	350	30	20	75	50	30	No	Yes	No	P7020A Lid	No	£3.30
<u>P7020B</u>	365	355	11	20	65	55	8	No	TBA	TBA	No	No	£3.30
<u>PAA016</u>	570	570	25	16	120	120	25	No	Yes	Yes	No	No	£4.30
<u>PAA025</u>	425	375	30	25	75	50	30	No	Yes	No	PAA025 Lid	No	£4.30
<u>PBAW16</u>	570	570	25	1+6	120	120	25	No	Yes	Yes	No	No	£7.10
<u>S1001</u>	275	275	33	1	233	233	30	Yes 3	No	No	S1xxx Lid	X1xxx	£2.10
<u>S1004</u>	275	275	33	4	100	100	20	Yes	Yes	Yes	S1xxx Lid	X1xxx	£2.10
<u>S1006A</u>	275	275	33	6	84	54	5	Yes	Yes	Yes	S1xxx Lid	X1xxx	£2.10
<u>S1006B</u>	275	275	33	6	100	64	20	Yes	Yes	Yes	S1xxx Lid	X1xxx	£2.10
<u>S1008</u>	275	275	33	8	100	46	20	Yes	Yes	Yes	S1xxx Lid	X1xxx	£2.10
<u>S1009A</u>	275	275	33	9	62	62	20	Yes	Yes	Yes	S1xxx Lid	X1xxx	£2.10
<u>S1009B</u>	275	275	33	9	66	66	19	Yes	Yes	Yes	S1xxx Lid	X1xxx	£2.10
<u>S1010A</u>	275	275	33	10	232	22 DIA	22 DIA	Yes	Yes	Yes	S1xxx Lid	X1xxx	£2.10
<u>S1010B</u>	275	275	33	10	100	30	20	Yes	Yes	Yes	S1xxx Lid	X1xxx	£2.10
<u>S1010C</u>	275	275	33	10	61 DIA	61 DIA	28	Yes	Yes	Yes	S1xxx Lid	X1xxx	£2.10
<u>S1012</u>	275	275	33	12	62	42	16	Yes	Yes	Yes	S1xxx Lid	X1xxx	£2.10
<u>S1015</u>	275	275	33	15	50	32	20	Yes	Yes	Yes	S1xxx Lid	X1xxx	£2.10
<u>S1016A</u>	275	275	33	16	52	52	16	Yes	Yes	Yes	S1xxx Lid	X1xxx	£2.10
<u>S1016B</u>	275	275	33	16	48	48	16	Yes	Yes	Yes	S1xxx Lid	X1xxx	£2.10
<u>S1018</u>	275	275	33	18	70	30	10	Yes	Yes	Yes	S1xxx Lid	X1xxx	£2.10
<u>S1020</u>	275	275	33	20	48	35	16	Yes	Yes	Yes	S1xxx Lid	X1xxx	£2.10
<u>S1024</u>	275	275	33	24	48	28	16	Yes	Yes	Yes	S1xxx Lid	X1xxx	£2.10
<u>S1025A</u>	275	275	33	25	40 DIA	40 DIA	16	Yes	Yes	Yes	S1xxx Lid	X1xxx	£2.10
<u>S1025B</u>	275	275	33	25	222	9 DIA	9 DIA	Yes	Yes	Yes	S1xxx Lid	X1xxx	£2.10
<u>S1025C</u>	275	275	33	25	38	38	12	Yes	Yes	Yes	S1xxx Lid	X1xxx	£2.10



Tray Photos + Sizes	Tray Length	Tray Width	Tray Depth	Pocket Qty.	Pocket Length	Pocket Width	Pocket Depth	Moveable Pockets 1	Trays Nest	Trays Stack	Matching Lids	Height Ext. 2	Price From 4
<u>S1030A</u>	275	275	33	30	40	34	16	Yes	Yes	Yes	S1xxx Lid	X1xxx	£2.10
<u>S1030B</u>	275	275	33	30	35	30	16	Yes	Yes	Yes	S1xxx Lid	X1xxx	£2.10
<u>S1036A</u>	275	275	33	36	27	27	15	Yes	Yes	Yes	S1xxx Lid	X1xxx	£2.10
<u>S1036B</u>	275	275	33	36	30	30	15	Yes	Yes	Yes	S1xxx Lid	X1xxx	£2.10
<u>S1036C</u>	275	275	33	36	30	30	12	Yes	Yes	Yes	S1xxx Lid	X1xxx	£2.10
<u>S1050A</u>	275	275	33	50	40	15	8	Yes	Yes	Yes	S1xxx Lid	X1xxx	£2.10
<u>S1064</u>	275	275	33	64	20	20	12	Yes	Yes	Yes	S1xxx Lid	X1xxx	£2.10
<u>S1070</u>	275	275	33	70	26	14	5	Yes	Yes	Yes	S1xxx Lid	X1xxx	£2.10
<u>S1100A</u>	275	275	33	100	18	18	13	Yes	Yes	Yes	S1xxx Lid	X1xxx	£2.10
<u>S1100B</u>	275	275	33	100	18	18	6	Yes	Yes	Yes	S1xxx Lid	X1xxx	£2.10
<u>S1CR19</u>	275	275	33	1+9	181	143	12	Yes	Yes	Yes	S1xxx Lid	X1xxx	£2.10
<u>S1T01</u>	255	155	30	1	216	118	30	Yes 3	No	No	S1Txx Lid	X1Txxx	£1.90
<u>S1T05</u>	255	155	30	5	105	35	16	Yes	Yes	Yes	S1Txx Lid	X1Txxx	£1.90
<u>S1T06</u>	255	155	30	6	64	50	20	Yes	Yes	Yes	S1Txx Lid	X1Txxx	£1.90
<u>S1T07</u>	255	155	30	7	205	16 DIA	16 DIA	Yes	Yes	Yes	S1Txx Lid	X1Txxx	£1.90
<u>S1T10</u>	255	155	30	10	215	11 DIA	11 DIA	Yes	Yes	Yes	S1Txx Lid	X1Txxx	£1.90
<u>S1T12A</u>	255	155	30	12	45	30	14	Yes	Yes	Yes	S1Txx Lid	X1Txxx	£1.90
<u>S1T12B</u>	255	155	30	12	64	21	11	Yes	Yes	Yes	S1Txx Lid	X1Txxx	£1.90
<u>S1T15</u>	255	155	30	15	33	33	5	Yes	Yes	Yes	S1Txx Lid	X1Txxx	£1.90
<u>S1T16</u>	255	155	30	16	40	20	12	Yes	Yes	Yes	S1Txx Lid	X1Txxx	£1.90
<u>S1T18</u>	255	155	30	18	30	30	16	Yes	Yes	Yes	S1Txx Lid	X1Txxx	£1.90
<u>S1T20</u>	255	155	30	20	49	19	6	Yes	Yes	Yes	S1Txx Lid	X1Txxx	£1.90
<u>S1T24</u>	255	155	30	24	28	20	16	Yes	Yes	Yes	S1Txx Lid	X1Txxx	£1.90
<u>S1T30</u>	255	155	30	30	30	16	11	Yes	Yes	Yes	S1Txx Lid	X1Txxx	£1.90
<u>S1T32</u>	255	155	30	32	21	21	12	Yes	Yes	Yes	S1Txx Lid	X1Txxx	£1.90
<u>S1T40</u>	255	155	30	40	18	18	4	Yes	Yes	Yes	S1Txx Lid	X1Txxx	£1.90
<u>S1T60</u>	255	155	30	60	16	12	7	Yes	Yes	Yes	S1Txx Lid	X1Txxx	£1.90
<u>S3T01</u>	355	255	28	1	296	216	26	Yes 3	No	Yes	S3Txx Lid	X3Txx	£2.35
<u>S3T04</u>	355	255	28	4	138	78	28	Yes	Yes	Yes	S3Txx Lid	No	£2.35
<u>S3T05</u>	355	255	28	5	206	52	16	Yes	Yes	Yes	S3Txx Lid	X3Txx	£2.35
<u>S3T10</u>	355	255	28	10	98	49	20	Yes	Yes	Yes	S3Txx Lid	X3Txx	£2.35
<u>S3T12</u>	355	255	28	12	54	54	21	Yes	Yes	Yes	S3Txx Lid	X3Txx	£2.35
<u>S3T16</u>	355	255	28	16	57	37	26	No	Yes	Yes	S3Txx Lid	X3Txx	£2.35
<u>S3T20A</u>	355	255	28	20	48	45	16	Yes	Yes	Yes	S3Txx Lid	X3Txx	£2.35
<u>S3T20B</u>	355	255	28	20	81	20	16	Yes	Yes	Yes	S3Txx Lid	X3Txx	£2.35
<u>S3T24</u>	355	255	28	24	41	41	17	Yes	Yes	Yes	S3Txx Lid	X3Txx	£2.35



Tray Photos + Sizes	Tray Length	Tray Width	Tray Depth	Pocket Qty.	Pocket Length	Pocket Width	Pocket Depth	Moveable Pockets 1	Trays Nest	Trays Stack	Matching Lids	Height Ext. 2	Price From 4
S3T40	355	255	28	40	32 DIA	32 DIA	20	Yes	Yes	Yes	S3Txx Lid	X3Txx	£2.35
S3T50	355	255	28	50	35	20	12	Yes	Yes	Yes	S3Txx Lid	X3Txx	£2.35
S5A01	350	290	30	1	290	232	30	Yes3	No	No	S5Axx Lid	X5Axx	£1.75
S5A06	350	290	30	6	100	90	18	Yes	Yes	Yes	S5Axx Lid	X5Axx	£1.75
S5A09	350	290	30	9	84	65	20	Yes	Yes	Yes	S5Axx Lid	X5Axx	£1.75
S5A10	350	290	30	10	100	50	18	Yes	Yes	Yes	S5Axx Lid	X5Axx	£1.75
S5A20A	350	290	30	20	44	44	12	Yes	Yes	Yes	S5Axx Lid	X5Axx	£1.75
S5A20B	350	290	30	20	50	50	16	Yes	Yes	Yes	S5Axx Lid	X5Axx	£1.75
S5A24	350	290	30	24	50	41	16	Yes	Yes	Yes	S5Axx Lid	X5Axx	£1.75
S5A30A	350	290	30	30	35	35	12	Yes	Yes	Yes	S5Axx Lid	X5Axx	£1.75
S5A30B	350	290	30	30	40	40	13	Yes	Yes	Yes	S5Axx Lid	X5Axx	£1.75
S7001	388	388	30	1	343	343	30	Yes 3	No	No	S7xxx Lid	No	£3.30
S7003A	388	388	30	3	336	80	5	Yes	No	No	S7xxx Lid	No	£3.30
S7003B	388	388	30	3	320	80	5	Yes	No	No	S7xxx Lid	No	£3.30
S7012	388	388	30	12	95	70	25	Yes	Yes	Yes	S7xxx Lid	No	£3.30
S7016	388	388	30	16	150	32	10	Yes	Yes	Yes	S7xxx Lid	No	£3.30
S7025	388	388	30	25	60	60	20	Yes	Yes	Yes	S7xxx Lid	No	£3.30
S7040	388	388	30	40	60	36	19	Yes	Yes	Yes	S7xxx Lid	No	£3.30
S7050	388	388	30	50	59	26	10	Yes	Yes	Yes	S7xxx Lid	No	£3.30
S7100	388	388	30	100	27	27	10	Yes	Yes	Yes	S7xxx Lid	No	£3.30
S7150	388	388	30	150	28	17	10	Yes	Yes	Yes	S7xxx Lid	No	£3.30
S7200	388	388	30	200	27	12	6	Yes	Yes	Yes	S7xxx Lid	No	£3.30
S7300	388	388	30	300	18	12	6	Yes	Yes	Yes	S7xxx Lid	No	£3.30
S7P01	508	370	30	1	465	326	30	Yes 3	No	No	S7Pxx Lid	X7Pxx	£3.30
S7P12	508	370	30	12	140	70	16	Yes	Yes	Yes	S7Pxx Lid	X7Pxx	£3.30
S7P24A	508	370	30	24	103	40	20	Yes	Yes	Yes	S7Pxx Lid	X7Pxx	£3.30
S7P24B	508	370	30	24	61	61	20	Yes	Yes	Yes	S7Pxx Lid	X7Pxx	£3.30
S7P25	508	370	30	25	80	56	20	Yes	Yes	Yes	S7Pxx Lid	X7Pxx	£3.30
S7P50A	508	370	30	50	47	47	11	Yes	Yes	Yes	S7Pxx Lid	X7Pxx	£3.30
S7P50B	508	370	30	50	83	24	10	Yes	Yes	Yes	S7Pxx Lid	X7Pxx	£3.30
S7P54	508	370	30	54	42	42	10	Yes	Yes	Yes	S7Pxx Lid	X7Pxx	£3.30
S7P60	508	370	40	60	49	30	25	Yes	Yes	Yes	S7Pxx Lid	No	£3.30
S7T001	555	355	30	1	475	295	30	Yes 3	No	No	S7Txxx Lid	No	£3.30
S7T004	555	355	30	4	222	133	30	Yes	Yes	Yes	S7Txxx Lid	No	£3.30
S7T006	555	355	30	6	144	134	20	Yes	Yes	Yes	S7Txxx Lid	No	£3.30
S7T010	555	355	30	10	132	80	20	Yes	Yes	Yes	S7Txxx Lid	No	£3.30



Tray Photos + Sizes	Tray Length	Tray Width	Tray Depth	Pocket Qty.	Pocket Length	Pocket Width	Pocket Depth	Moveable Pockets 1	Trays Nest	Trays Stack	Matching Lids	Height Ext. 2	Price From 4
<u>S7T015</u>	555	355	30	15	85	81	16	Yes	Yes	Yes	S7Txxx Lid	No	£3.30
<u>S7T020</u>	555	355	30	20	80	60	16	Yes	Yes	Yes	S7Txxx Lid	No	£3.30
<u>S7T100</u>	555	355	30	100	26 DIA	26 DIA	15	Yes	Yes	Yes	S7Txxx Lid	No	£3.30
<u>S8A01</u>	470	380	36	1	375	315	36	Yes 3	No	No	S8Axx Lid	No	£5.40
<u>S8A06</u>	470	380	36	6	168	88	36	No	Yes	Yes	S8Axx Lid	No	£5.40
<u>S8A10</u>	470	380	36	10	133	58	36	No	Yes	Yes	S8Axx Lid	No	£5.40
<u>S8A12</u>	470	380	36	12	74 DIA	74 DIA	36	No	Yes	Yes	S8Axx Lid	No	£5.40
<u>S8A20</u>	470	380	36	20	59	59	36	No	Yes	Yes	S8Axx Lid	No	£5.40
<u>S8T01</u>	555	355	49	1	475	296	49	Yes3	No	No	S8Txx Lid	No	£5.40
<u>S8T09</u>	555	355	49	9	141	82	49	Yes	Yes	Yes	S8Txx Lid	No	£5.40
<u>S9A001</u>	530	290	30	1	467	232	30	Yes 3	No	No	S9Axxx Lid	No	£2.30
<u>S9A004</u>	530	290	30	4	212	94	25	Yes	Yes	Yes	S9Axxx Lid	No	£2.30
<u>S9A008</u>	530	290	30	8	99	99	20	Yes	Yes	Yes	S9Axxx Lid	No	£2.30
<u>S9A010A</u>	530	290	30	10	218	30	12	Yes	Yes	Yes	S9Axxx Lid	No	£2.30
<u>S9A010B</u>	530	290	30	10	103	81	18	Yes	Yes	Yes	S9Axxx Lid	No	£2.30
<u>S9A012A</u>	530	290	30	12	103	70	16	Yes	Yes	Yes	S9Axxx Lid	No	£2.30
<u>S9A012B</u>	530	290	30	12	140	41	18	Yes	Yes	Yes	S9Axxx Lid	No	£2.30
<u>S9A015</u>	530	290	30	15	141	30	12	Yes	Yes	Yes	S9Axxx Lid	No	£2.30
<u>S9A020</u>	530	290	30	20	100	30	20	Yes	Yes	Yes	S9Axxx Lid	No	£2.30
<u>S9A024</u>	530	290	30	24	70	45	17	Yes	Yes	Yes	S9Axxx Lid	No	£2.30
<u>S9A032A</u>	530	290	30	32	48	48	16	Yes	Yes	Yes	S9Axxx Lid	No	£2.30
<u>S9A032B</u>	530	290	30	32	40 DIA	40 DIA	20	Yes	Yes	Yes	S9Axxx Lid	No	£2.30
<u>S9A040</u>	530	290	30	40	48	35	16	Yes	Yes	Yes	S9Axxx Lid	No	£2.30
<u>S9A050</u>	530	290	30	50	38	38	12	Yes	Yes	Yes	S9Axxx Lid	No	£2.30
<u>S9A100</u>	530	290	30	100	40	15	8	Yes	Yes	Yes	S9Axxx Lid	No	£2.30
<u>S9A140</u>	530	290	30	140	26	14	5	Yes	Yes	Yes	S9Axxx Lid	No	£2.30
<u>X7P24A</u>	508	370	40	24	102	39	20	Yes	Yes	Yes	S8Pxx Lid	No	£5.40
<u>X7P24B</u>	508	370	40	24	60	60	20	Yes	Yes	Yes	S8Pxx Lid	No	£5.40
<u>X7P25</u>	508	370	40	25	79	55	20	Yes	Yes	Yes	S8Pxx Lid	No	£5.40

Notes:

1 = See flexible depth pocket explanation on p2.

2 = Height extension exists if a code is given in this column. See height extension explanation on p2.

3 = These trays can be made with shallower pockets, but a charge will apply to make specific pocket depths.

4 = Price from is based on orders of 200+ trays in white ECO material. See website for full pricing details. Prices are current at time of brochure design, but can be changed at any time.



SODIMM, DIMM & DDR Trays

We have 4 different size standard vacuum formed trays which have multiple slots in the sides to accept laptop & desktop memory chips. Complete information can be found online at <http://www.toolcraft.co.uk/vacuum-formed-standard-laptop-desktop-memory-chip-trays.htm>

Tray TYPE	Tray FOOTPRINT			Type	Qty.	Tray SLOTS			Price From **
	L	W	D			L	W	D	
SODI25	328	92	44	SODIMM slots »	25	70	2	22	£2.35
DIMM25	328	158	43	DIMM slots »	25	134	2	40	£2.35
SONDIMM2010	167	106	37*	SODIMM slots »	20	70	2	37 *	£2.10
SONDIMM2010	167	106	37*	DIMM slots »	10	134	2	37 *	£2.10
SONDIMM4020	205	167	37*	SODIMM slots »	40	70	2	37 *	£2.35
SONDIMM4020	205	167	37*	DIMM slots »	20	134	2	37 *	£2.35

Notes: * Depth with Lid fitted ** Price from are based on orders of 200+ trays in white ECO recycled material. Please see website for full pricing details. Prices are current at time of brochure design, but can be changed at any time.

Custom Vacuum Forming Service

We can also design a tray for you from scratch, which allows you to build in a number of special features:

Nesting and stacking: see illustration & explanation on p. 2.

Finger recesses, grip features & slots: Trays can be made with very tight fitting pockets and grips so that the content is secure. Finger recesses make it easy to get the content out while maintaining protection. Slots can be used to slide in and secure a product, for example memory chips.

Embossed or engraved text & images: Text features can be very useful for brand promotion, presentation or identification purposes and counting.

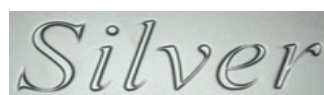
Colours & effects: A range of colours and special effects is available, as are antistatic and UV stabilised grades.



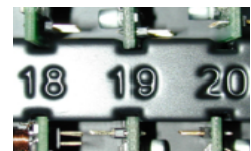
grips & finger recesses to hold & access spoon



finger recesses for easy access



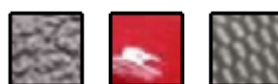
vacuum formed text for branding



vacuum formed text for identification & stocktaking



10 + standard colours



pinseal, gloss & carbon fibre



flocked (felt) coated plastics

To find out more about our custom vacuum forming service, have a look at http://www.toolcraft.co.uk/vacuum_formed_custom_made_trays.htm